

WARNING:

Adding the WiFi card implies breaking the warranty seal placed on top the fixing screws of the metal housing plate.

After removing the meter cover and before doing any other action:

Detach the Battery cable from the Mother board

(fig.1 & fig.2) and follow instructions shown here below.

In case of any doubt or needed help, before starting the installation of this WiFi option, contact the ROVER technical staff by calling 0039 030 9198 1.

ROVER is not responsible for any damage caused by inexperience or negligence action by any not qualified person.

The following procedure to add the optional WiFi board requires a Phillips screwdriver (not included with the Option Kit).

Fig. 1

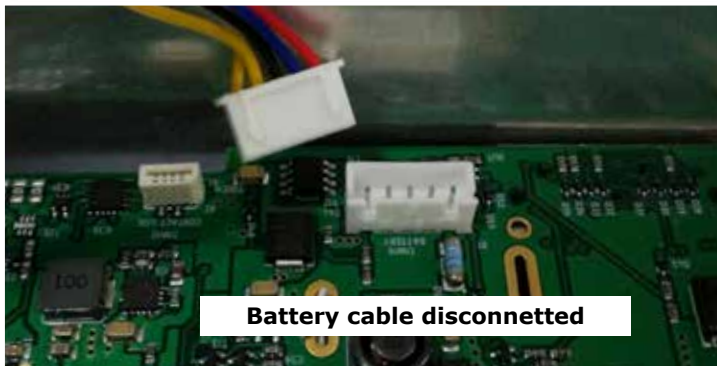
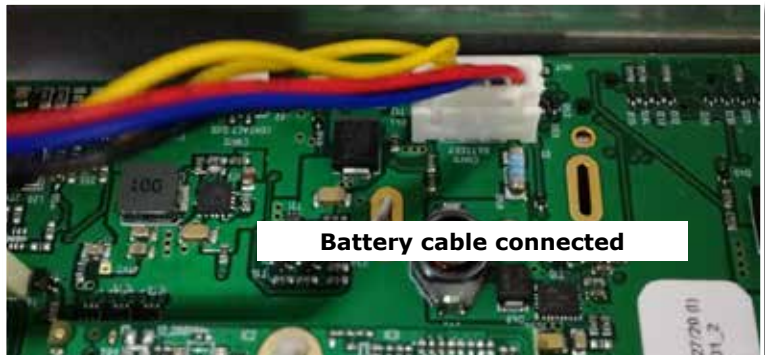


Fig. 2

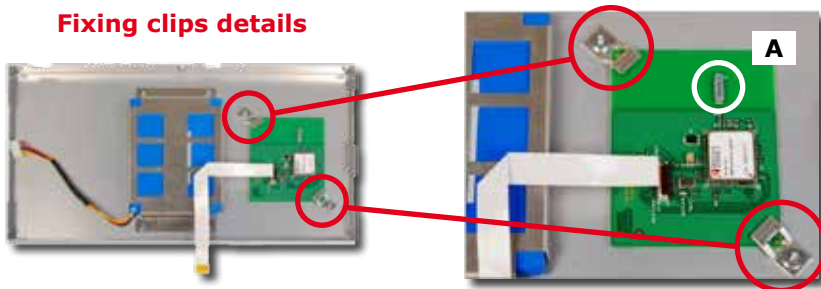
- 1) Place the 2 double sided glue tape strips as shown in the example here below, these are used for a better grip of the board.

**Where to place
2 tape strips**

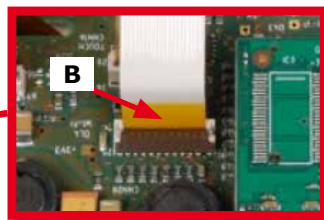
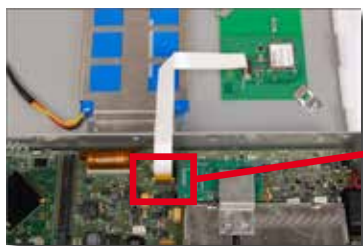


- 2) Fix the WIFI card to the rear panel of the instrument, using the special fixing clips and screws supplied with the kit;
Make sure that the antenna (A) is in the center of the rear panel.

Fixing clips details



- 3) Insert the flat cable into the motherboard connector, making sure to first open the fixing clip by lifting it.
The colored reference (B) must be inserted on the same side of the connector block. After the insertion, lower the clip to lock the connector and fix the flat cable.



- 4) Connect the battery pack cable to the motherboard and close the instrument being careful not to "pinch" the cables.

WARNING:

Adding the HEVC option, implies breaking the warranty seal placed on top the fixing screws of the metal cover.

After removing the meter cover and before starting any other of action:

Detach the Battery pack cable from the Mother board

(fig.1 & fig.2) and follow instructions shown here below.

In case there are any doubts about the provided instructions, please contact the ROVER technical staff at: +39 030 9198 1.

ROVER is not responsible for any eventual damage caused by imperice.

The pictures in the first pages refer to the TAB 5 ULTRA, for the HD TAB 900 HEVC location see fig. 3 & 4 at the end of this document. The procedure to plug the board to them other board is similar as the TAB 5 ULTRA.

The following procedure to add the optional HEVC optional board requires a Phillips screwdriver which in not in the provided Kit.

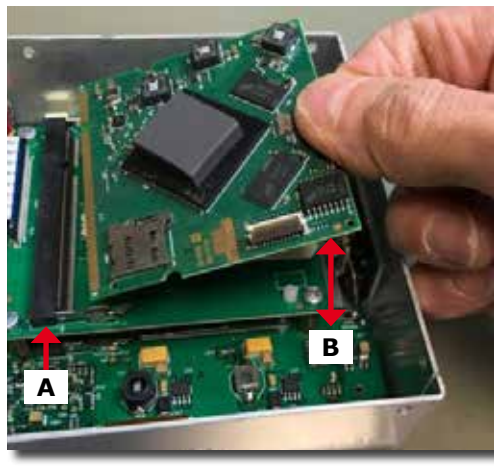
Fig. 1



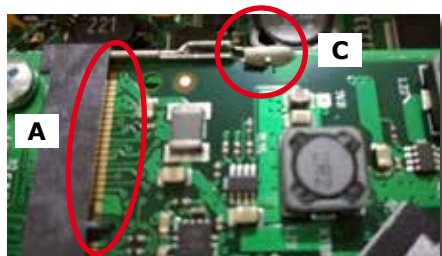
Fig. 2

Procedure to add HEVC optional board

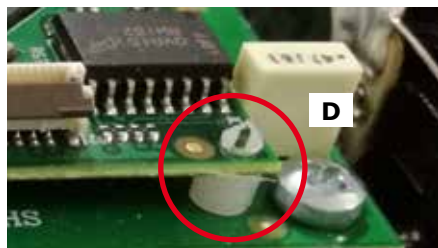
- 1) Position the HEVC board so that it can be inserted into the motherboard connector (A), holding it oblique with respect to the plane (B).



- 2) Once it has inserted, push it downwards in order to hook the two steel side stops (C) and press the two plastic stops (D) on the sides of the HEVC board, which must be inserted into the appropriate holes below.



*Details of steel hook detail (C)
and final position of the inserted board (A).*



Plastic spacer detail (D).

- 3) Connect the battery pack cable to the motherboard and close the instrument, with special caution to not "pinch" any cables.