

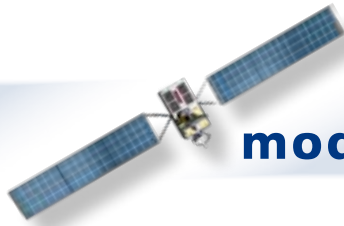


DESIGN & MANUFACTURING SINCE 1972

SIMULTANEOUS MONITORING OF 24 SATELLITE TRANSPONDERS GEO-MEO-LEO, UP & DOWN LINK, FULLY INTEGRATED IN ONE UNIT

with Built-in: 8 way Switch, 8 Spectrum Analyzers, 2 Quality Analyzers & WEB Server

SAT
CARRIER
MONITOR



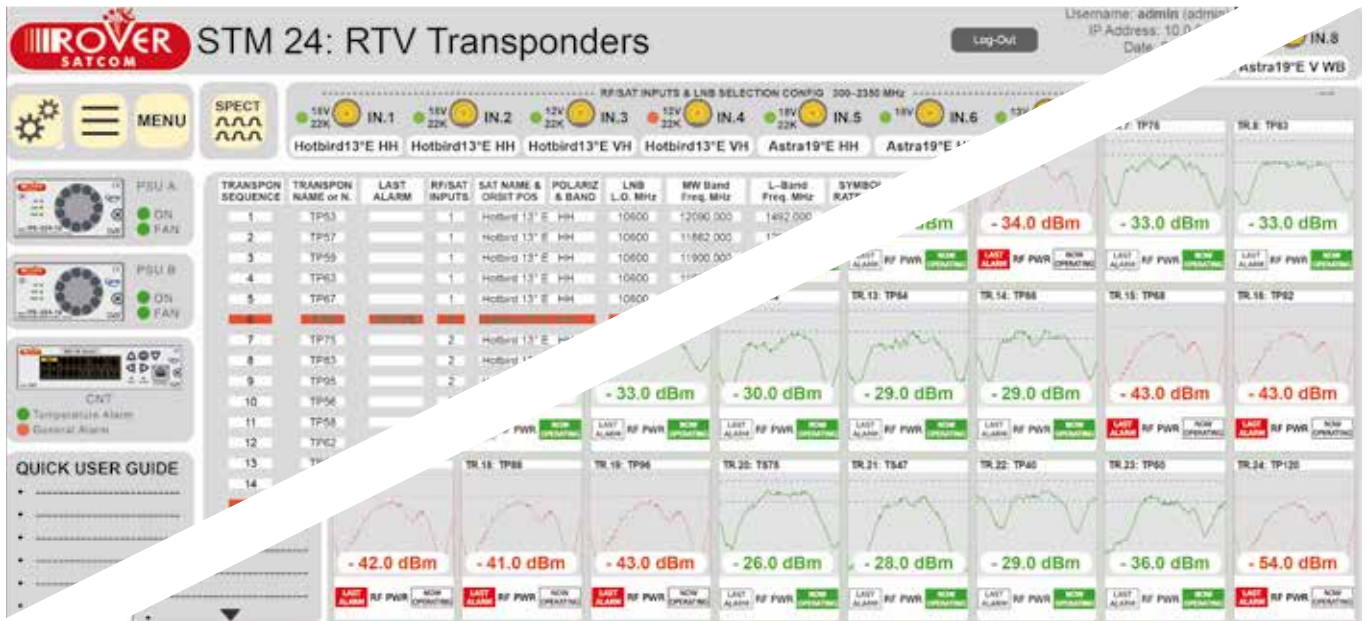
Satellite
Transponder
Monitoring
System
24 Transp.
L-Band

mod. **STM24-L**

On Site
Free Testing
Available



- The best Price/Space/Speed Performance available
- No others external HW or SW Required
- 24/7 Fully Remote Operation/Configuration
- Identify problems before your customers do
- Alert NOCs/operator/engineer via Trap or Mail
- Observe historical or current live events
- Year/Month/Day/Hour, Time Line & D.Logger
- World Wide reachable via SNMP & WEB
- Ideal for small & large Operators & Teleports
- Reliable Support and Training available



INNOVATIVE
PERFORMANCE

for: SYSTEM INTEGRATOR,
TELEPORT BROADCASTER,
CABLE NETWORK, GOVERNMENT
& MILITARY COMMUNICATIONS



1972 > 2021 >>

49 YEARS OF INNOVATION

WHAT ARE THE "STM24" TARGETS?

- To Monitor 24 Satellite Transponders on high competitive level, in terms of Price/Speed & Performance
- Reduction of the required Space to 1U Rack
- To be worldwide, reachable using only a WEB browser

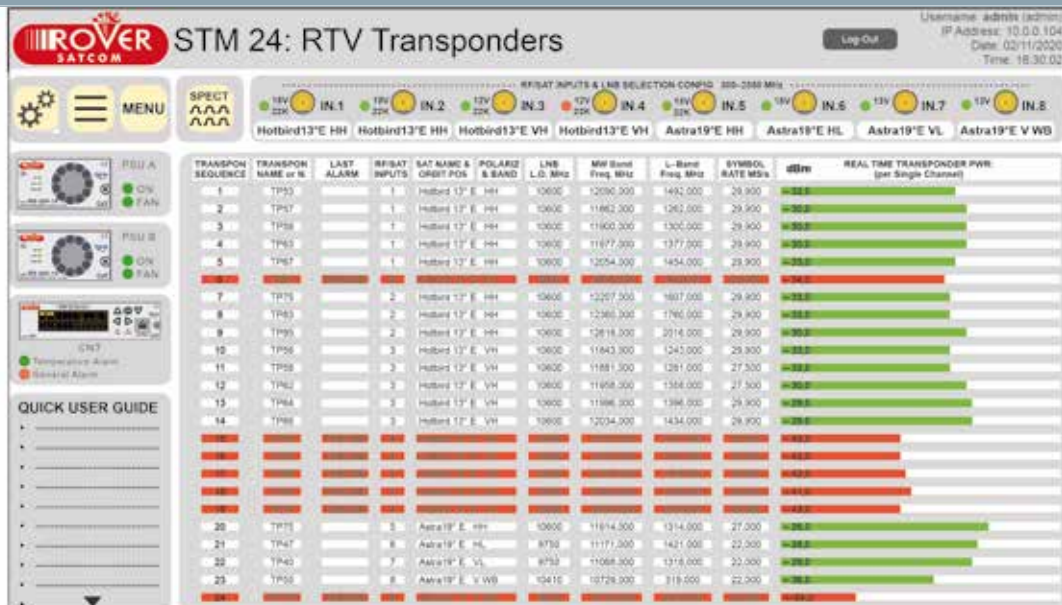
WHAT ARE THE NEW "STM24" PERFORMANCE?

- All HW & SW fully integrated in one unit
- Can Simultaneously Measure & Display the Signals condition of 24 Satellite Transponders and related Alarms Status
- Can Simultaneously Display 24 Satellite Transponders Spectrum Mosaic, the related channel PWR, the user defined Alarms Limit Mask and Alarms Trending
- Easy to find/read stored events, thanks to quick Year/Month/Day/Hour Time Line Search, plus separate full Data Logger, with current and Historical events
- Full System Management to identify problems (before your customer) and Immediately Allert Controller/Engineers via Traps, Mail, Synoptic and acoustic alarms

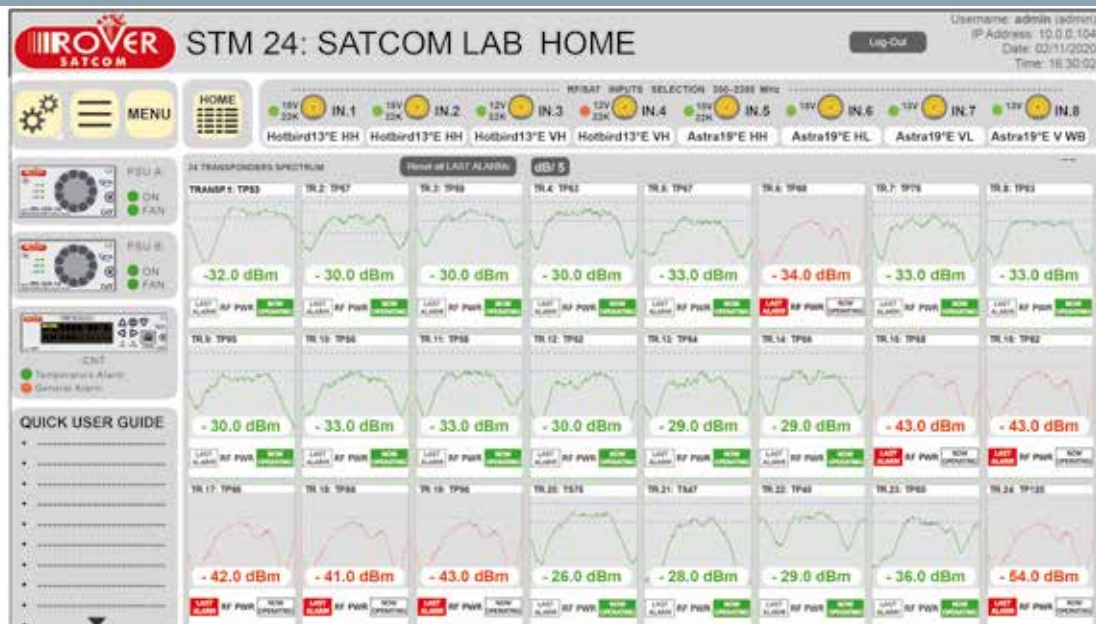
WHAT THE "STM24" CAN INTEGRATE?

- N. 1 RF/SAT 8 way Input Switch
- N. 8 Extended L-Band Spectrum Analyzer
- N. 24 Carriers processors (one each Transponder)
- N. 2 (opt.) Satellite & TV Demod. for Quality Measurements
- N. 2 HOT-SWAP Redundant Power Supply Unit
- N. 2 (opt.) RF/SAT Outputs, Port (24 Selected Transponders)
- N. 8 (opt.) RF/SAT Monitor Ports (one each input)
- N. 8 (opt.) Separated & Controlled LNB Powering
- N. 1 HOT-SWAP Local Controller with Display
- N. 2 Ethernet Ports, front & rear
- N. 1 Optical Ethernet ports, via SFP Module
- N. 1 WEB SERVER & SNMP MIB

HOME PAGE: 8 RF/SAT INPUTS, 24 TRANSPONDERS MEASURE/MONITORING & ALARMS



MOSAIC OF 24 TRANSPONDERS SPECTRUM with ch PWR & ALARM LIMITS THRESHOLDS



"STM24-L" TECHNICAL SPECIFICATIONS

RF & PORTS:

- **Frequency Range:** Extended L-Band 250-2.350 MHz
- **Frequency Resolution:** 1 KHz
- **Frequency Accuracy:** 5 KHz (worst case)
- **Input Ports Capacity:** N. 8 RF/SAT
- **RF/SAT Monitor Ports:** (opt.) N. 8 at -20 dB ± 3 (each input)
- **RF/SAT Output Ports:** (opt.) N. 2 with 24 Selected Transp.
- **RF Connectors:** 75 ohm F(f) or 50 ohm SMA (f) (opt.)
- **Port to Port Isolation:** typ. 60 dB, min 50 dB (worst case)
- **Input Return Loss:** typ. 16 dB at 75 ohm, 18 dB at 50 ohm
- **LNB powering:** N. 8 separated PSU, 500 mA each

CHANNEL POWER MEASUREMENTS: (Already related to the Transponder BW)

- **Power Range:** -60 to -10 dBm
- **Max safe input:** +10 dBm
- **Amplitude accuracy:** 1 dB typ.
- **Measurements unit:** dBm or dBμV or dBm
- **Transponder Preselection BW:** adj. from 5 to 65 MHz
- **Measur. Speed:** 5 mS per Transponder

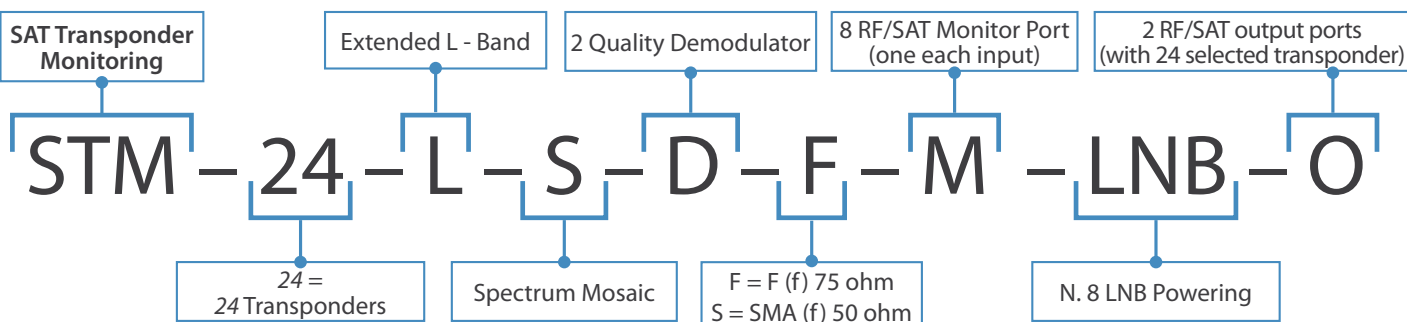
SPECTRUM MEASUREMENTS:

- **Power Range:** -75 to +10 dBm
- **Max safe Input:** +10 dBm
- **Noise floor:** -85 dBm
- **Amplitude accuracy:** 1 dB typ.
- **Aliasing:** -55 dB
- **Refresh speed:** 1 sec per Transponder
- **Resolution BW:** 5 MHz at 50 MHz SPAN
- **Video BW:** 10 KHz
- **SPAN:** from 50 MHz to 2 GHz
- **dB/Div.:** 5 or 10 dB selectable

GENERAL SPECIFICATIONS:

- **PSU:** N. 2 Redundant
- **PSU Voltage:** 110 to 240 Vac
- **PSU Consumption:** 25 W
- **Slim case:** 1U 19" Rack
- **Net Weight:** 5 to 8 Kg (options depends)
- **Temperature range:** -30 to +55° C
- **Umidity:** 95 %
- **EMC:** EN 50083-2
- **Safety:** EN 50083-1 and EN 60950

ORDERING CODE DEFINITION



ORDERING MODEL / CODE EXAMPLE

MODEL / CODE	DESCRIPTION	APPLICATION
STM24 - L	24 Transponders Base version System	SAT Monitoring

OPTIONS

ITEM Model	DESCRIPTION	APPLICATION
STM24 - DEM	(HW) N. 2 SAT & TV DVB-ISDBT Quality Demodulator	MER-BER-CONSTEL
STM24 - SMA	(HW) N. 8 RF/SAT "SAM" 50 ohm Input Connectors	50 ohm Impedance
STM24 - MON	(HW) N. 8 RF/SAT Monitor Ports (one each Input)	IN signals Monitor
STM24 - LNB	(HW) N. 8 Separated LNB powering	LNB Powering
STM24 - OUT	(HW) N. 2 RF/SAT Outputs with 24 selected Transponders	Transp. OUT for measures

STM V5,4 3-12-20



Product
made in Italy by
Rover Broadcast.com

CERTIFICATES N°
1263 ISO 9001
1264 ISO 14001
1265 ISO 45001



Specifications and features are subject to change without notice.

RO.VE.R. Laboratories S.p.A.
Via Parini, 2 - 25019 Sirmione (BS) Italy
info@roverinstruments.com • www.roverbroadcast.com