

**HD TAB 700 series****NEW - Display Replacement****Flat Cable  
connection  
change****BENCH PREPARATION:**

- a) "Display with touch panel replacement",
- b) Front panel polycarbonate label,
- c) Pliers,
- d) Screwdriver.

**PROCEDURE:****Sequence number**

1. Upgrade the HD TAB 700 to the latest FW version available on our web site [www.roverinstruments.com](http://www.roverinstruments.com).
2. Apply the existing procedure to replace the display.
3. The difference with the previous procedure is about how to connect the Touch panel flat cable:
  - a. The touch panel flat cable (ref. Red circle in Fig. 2) must be connected to the mother board with a 180° twisted cable.
  - b. This rotations allow the touch screen plug contacts to match those of the mother board socket.  
If by mistake the cable is not twisted, the touch screen will not work but no harm will be caused to the meter's motherboard nor touch panel.
4. **REASSEMBLE the HD TAB 700**
  - a. Reassemble the meter following the existing procedure.

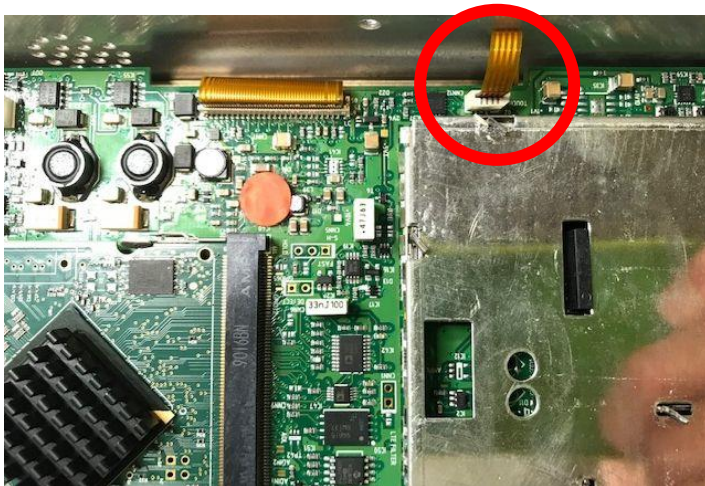


Fig.1 touch screen flat cable for old display type.

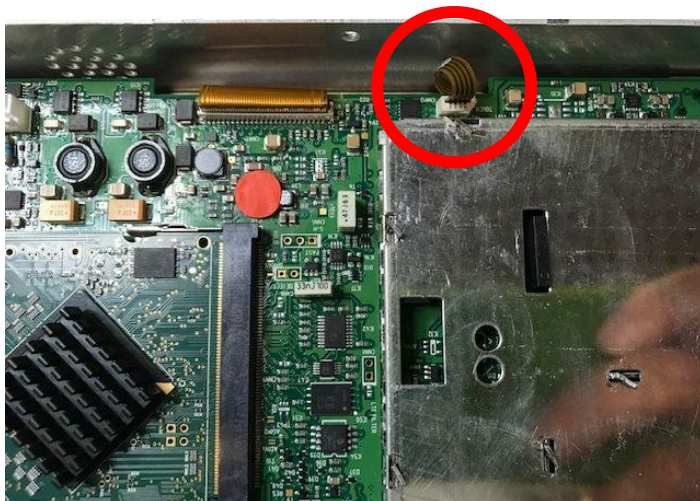


Fig.2 twisted touch screen flat cable for new display type.