

**HD TAB 7
Lite & Evo****NEW - Display Replacement****Flat Cable
connection
change****BENCH PREPARATION:**

- a) Display with touch panel replacement;
- b) Front panel polycarbonate label;
- c) Pliers;
- d) Screwdriver.

PROCEDURE:

Sequence number

1. Upgrade the HD TAB 7 Lite & Evo to the latest FW version available on our web site www.roverinstruments.com;
2. Apply the existing procedure to replace the display;
3. The difference with the previous procedure is about how to connect the Touch panel flat cable:
 - a. The touch panel flat cable (ref. Red circle in Fig. 2) must be connected to the mother board with a 180° twisted cable;
 - b. This rotations allow the touch screen plug contacts to match those of the mother board socket;
If by mistake the cable is not twisted, the touch screen will not work but no harm will be caused to the meter's mother-board nor touch panel.
4. **REASSEMBLE the HD TAB 7 Lite & Evo**
 - a. Reassemble the meter following the existing procedure;



Fig.1 Touch screen flat cable for old display type.

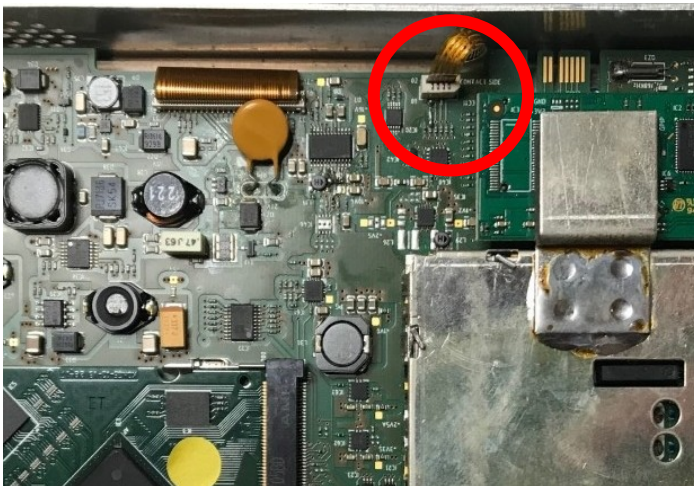


Fig.2 Twisted touch screen flat cable for new display type.